

### Kenorland Minerals Reports Remaining Assay Results from Regnault 2021 Winter Drill Program

Vancouver, British Columbia, June 29, 2021 – **Kenorland Minerals Ltd. (TSXV:KLD)(FSE:3WQ0)** (“**Kenorland**” or “**the Company**”) is pleased to announce final drill results from the 8,591m diamond drill program, completed in early May, at the Regnault gold discovery within the **Frotet Project (“the Project”)**, located in northern Quebec and held under joint venture (the “**Joint Venture**”) with Sumitomo Metal Mining Canada Ltd (“**SMMCL**”).

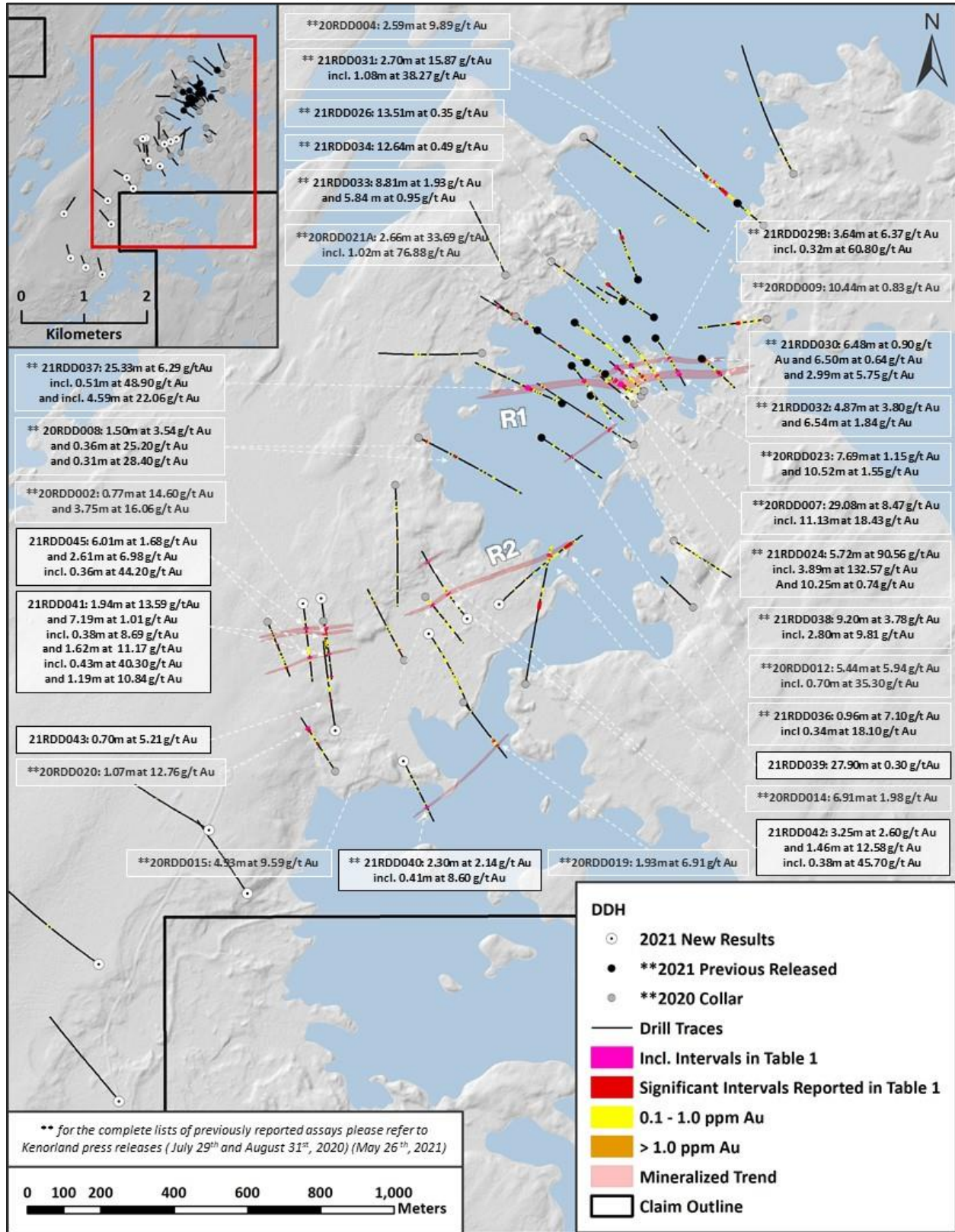
Remaining assays have been received and compiled from the final 15 of 30 diamond drill holes, including 5,104 meters, completed during the program. Seven of these holes were targeting the ‘R2’ structure, of which six encountered significant gold mineralization. The R2 structure is located over 500m to the south of, and oriented sub-parallel to, the R1 structure, on which results were reported on May 26, 2021 and included a highlight of 5.72m over 90.56 g/t Au. The remaining eight drill holes, testing regional targets to the south, and outside of, the of the Regnault discovery area footprint, did not encounter any significant mineralization.

Figure 1. Table of Results

Hole ID	Target		From (m)	To (m)	Length (m)	Au (g/t)	Ag (g/t)	Residual Au (g/t)
21RDD039	R2		321.50	349.40	27.90	0.30	0.26	
21RDD040	R2		192.70	195.00	2.30	2.14	2.48	0.74
		Incl.	193.47	193.88	0.41	8.60	9.20	
21RDD041	R2		<b>91.20</b>	<b>93.14</b>	<b>1.94</b>	<b>13.59</b>	<b>30.80</b>	
		And	110.73	117.92	7.19	1.01	1.26	0.58
		Incl.	111.12	111.50	0.38	8.69	12.80	
		<b>And</b>	<b>207.13</b>	<b>208.75</b>	<b>1.62</b>	<b>11.17</b>	<b>21.96</b>	0.64
		<b>Incl.</b>	<b>208.00</b>	<b>208.43</b>	<b>0.43</b>	<b>40.30</b>	<b>78.90</b>	
21RDD042	R2		291.00	292.19	1.19	10.84	13.47	
			113.42	116.67	3.25	2.60	2.90	1.64
		Incl.	114.20	115.80	1.60	3.58	3.84	
		And	245.65	247.11	1.46	12.58	20.75	0.92
21RDD043	R2		246.32	246.70	0.38	45.70	74.70	
			113.12	113.82	0.70	5.21	1.90	
21RDD044	R2		no significant intervals					
21RDD045	R2		88.04	94.05	6.01	1.68	1.84	1.08
		Incl.	91.66	93.15	1.49	3.48	3.01	
		And	104.77	105.35	0.58	6.72	5.50	
		<b>And</b>	<b>197.59</b>	<b>200.20</b>	<b>2.61</b>	<b>6.98</b>	<b>15.47</b>	1.02
21RDD045	R2	<b>Incl.</b>	<b>197.59</b>	<b>197.95</b>	<b>0.36</b>	<b>44.20</b>	<b>90.10</b>	
21RDD046	Regnault South		no significant intervals					
21RDD047	Regnault South		no significant intervals					
21RDD048	Regnault South		no significant intervals					
21RDD049	Regnault South		no significant intervals					
21RDD050	Regnault South		no significant intervals					
21RDD051	Regnault South		no significant intervals					
21RDD052	Regnault South		no significant intervals					
21RDD053	Regnault South		no significant intervals					

Zach Flood, CEO of Kenorland Minerals, states, “We’re thrilled to announce the remaining results from the winter drill program at Regnault. This concludes another successful exploration campaign at the Frotet Project, which we are advancing with our joint venture partner, Sumitomo Metal Mining. These results demonstrate an additional continuous structure of high-grade gold mineralization, over 500m to the south of R1, highlighting the potential for additional parallel mineralized structures within the area. We’re very excited to begin drilling again in mid-July with a planned program consisting of up to 20,000m of drilling at Regnault, along with a significant amount of follow-up exploration on other regional targets within the Frotet Project.”

Figure 2. Plan Map of Reported Drilling



## Discussion of Results

The developing R2 mineralized corridor is characterized by high grade quartz-carbonate-pyrite veins, which were originally intercepted during the maiden diamond drill program at Regnault in 2020 (*Press Release dated July 29, 2020, 20RDD002: 3.75m @ 16.06 g/t Au, and 20RDD015: 4.93m @ 9.59g/t Au*). Vein hosted mineralization is associated with an east-northeast trending, moderately south dipping contact between the Regnault intrusive complex (south) and volcanics (north). Gold bearing veins identified to date within eastern portions of the R2 corridor are defined as shear hosted, laminated quartz-carbonate-pyrite veins hosted within volcanics in proximity to the intrusive contact, and within monzodioritic intrusive rocks. Along the western portion of the R2 trend, multiple stacked quartz-pyrite veins are extensional in nature with attitudes perpendicular to the intrusive-volcanic contact.

Continued exploration at Regnault since early 2020 has indicated a robust gold system hosting high-grade mineralization along multiple structures within a growing footprint. The company's understanding of the system, namely the orientation of mineralized structures has developed significantly throughout this latest round of drilling. The R1 and R2 structures both strike in a general east-west direction. Step-outs from this program have delineated an approximate strike of 550 meters along the R1 structure, and 800m along the R2 structure, both of which remain open to the east, west, and down dip. While R1 and R2 trend in a general east-west direction, they occur within a general two kilometer north-northeast trend where significant gold has been intersected in drilling. This highlights the potential for additional parallel mineralized structures between, and to the north and south of both R1 and R2.

## Summer 2021 Exploration Plans

The next phase of exploration begins in mid-July, where the Joint Venture is planning up to 20,000m of additional drilling at Regnault as well as further regional exploration within the Frotet Project. The upcoming drill program will primarily focus on infill and step-outs along the R1 structure. A significant number of meters will also be allocated towards continued testing along the R2 structure and follow-up on additional zones of mineralization encountered throughout the Regnault trend. Since the initial discovery in 2020, the Company has completed 16,413 meters of drilling at Regnault.

Figure 3. Drill Collar Table

HOLE ID	Easting (NAD83)	Northing (NAD83)	Elevation (m)	Depth (m)	Dip	Azimuth
21RDD039	519147.0	5620130.0	379.0	398.00	-45	48
21RDD040	518886.0	5619702.0	377.0	252.00	-45	151
21RDD041	518662.0	5620146.0	384.0	303.00	-45	172
21RDD042	519060.0	5620090.0	379.0	290.00	-45	318
21RDD043	518700.0	5619786.0	379.0	333.00	-45	352
21RDD044	518955.0	5620050.0	378.0	326.00	-45	145
21RDD045	518612.0	5620132.0	383.0	287.00	-45	172
21RDD046	518460.0	5619342.0	390.0	336.00	-45	326
21RDD047	518356.0	5619514.0	398.0	327.00	-45	301
21RDD048	517705.0	5618085.0	404.0	290.00	-45	338
21RDD049	517460.0	5618235.0	403.0	302.00	-45	343
21RDD050	518055.0	5619149.0	398.0	435.00	-45	308
21RDD051	517967.0	5617972.0	378.0	392.00	-45	345
21RDD052	518110.0	5618775.0	388.0	387.25	-45	324
21RDD053	517354.0	5618940.0	405.0	446.00	-47	35



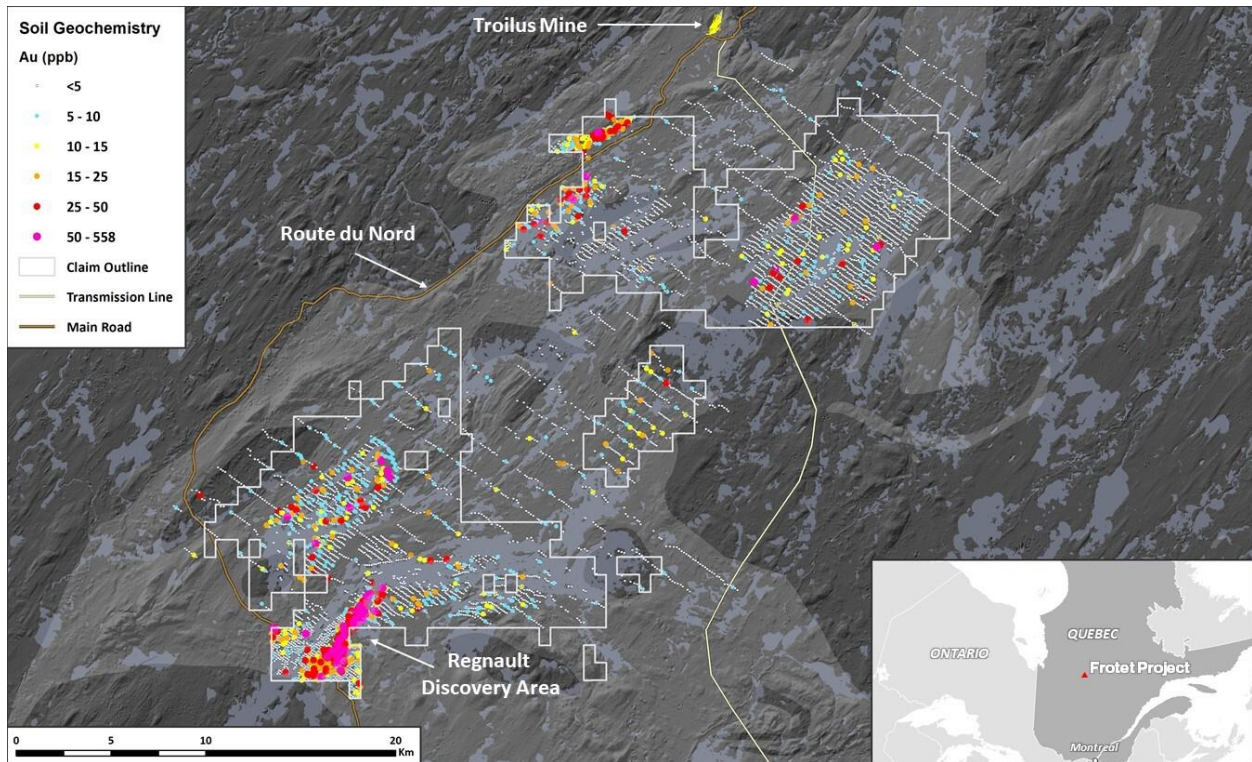
## Qualified Person

Mr. Jan Wozniowski, B. Sc., P. Geo., OGQ (#2239) is the “Qualified Person” under National Instrument 43-101, has reviewed and approved the scientific and technical information in this press release.

## About the Frotet Project

The Frotet Project was first identified by Kenorland in 2017 after completing a regional prospectivity study over the Abitibi and Frotet-Evans Greenstone Belts of Quebec. The initial 55,921 ha property was acquired through map staking in March, 2017 and optioned to Sumitomo Metal Mining Canada Ltd. (“SMMCL”), a wholly owned subsidiary of Sumitomo Metal Mining Co., Ltd. in April, 2018. Two years of property-wide systematic till sampling led to a maiden drill program in 2020 which resulted in a significant grassroots discovery at the prospect now named Regnault. The project is currently under Joint Venture agreement between SMMCL and Kenorland Minerals Ltd., with interests being held at 80% and 20% respectively. Under the Joint Venture, exploration is funded pro-rata. Any party which does not contribute and is diluted below a 10% interest, converts its interest to an 2% uncapped net smelter royalty.

Figure 4. Map of Frotet Project showing Regional Till Sampling Geochemical Results



## About Kenorland Minerals

Kenorland Minerals Ltd. (TSX.V KLD) is a mineral exploration Company incorporated under the laws of the Province of British Columbia and based in Vancouver, British Columbia, Canada. Kenorland’s focus is early to advanced stage exploration in North America. The Company currently holds three projects in Quebec where work is being completed under joint venture and earn-in agreement from third parties. The Frotet Project is held under joint venture with Sumitomo Metal Mining Canada Ltd. (SMMCL), the Chicobi Project is optioned to SMMCL, and the Chebistuan

Project is optioned to Newmont Corporation. The Company also owns 100% of the advanced stage Tanacross porphyry Cu-Au project as well as an option to earn up to 70% from Newmont Corporation on the Healy Project, both located in Alaska, USA.

Further information can be found on the Company's website [www.kenorlandminerals.com](http://www.kenorlandminerals.com)

Kenorland Minerals Ltd.

**Zach Flood**

President and CEO

Tel: +1 604 363 1779

[zach@kenorlandminerals.com](mailto:zach@kenorlandminerals.com)

Kenorland Minerals Ltd.

**Francis MacDonald**

Executive Vice President

Tel: +1 778 322 8705

[francis@kenorlandminerals.com](mailto:francis@kenorlandminerals.com)

### **Cautionary Statement Regarding Forward Looking Statements**

*This news release contains forward-looking statements and forward-looking information (together, "forward-looking statements") within the meaning of applicable securities laws. All statements, other than statements of historical facts, are forward-looking statements. Generally, forward-looking statements can be identified by the use of terminology such as "plans", "expects", "estimates", "intends", "anticipates", "believes" or variations of such words, or statements that certain actions, events or results "may", "could", "would", "might", "will be taken", "occur" or "be achieved". Forward looking statements involve risks, uncertainties and other factors disclosed under the heading "Risk Factors" and elsewhere in the Company's filings with Canadian securities regulators, that could cause actual results, performance, prospects and opportunities to differ materially from those expressed or implied by such forward-looking statements. Although the Company believes that the assumptions and factors used in preparing these forward-looking statements are reasonable based upon the information currently available to management as of the date hereof, actual results and developments may differ materially from those contemplated by these statements. Readers are therefore cautioned not to place undue reliance on these statements, which only apply as of the date of this news release, and no assurance can be given that such events will occur in the disclosed times frames or at all. Except where required by applicable law, the Company disclaims any intention or obligation to update or revise any forward-looking statement, whether as a result of new information, future events or otherwise.*

**Neither the TSX Venture Exchange nor its Regulation Services Provider (as that term is defined in the policies of the TSX Venture Exchange) accepts responsibility for the adequacy or accuracy of this release.**